



# NetBotz Room Monitor 755

## Security and Environmental Monitoring

The NetBotz Room Monitor 755 provides integrated surveillance, sensing, access control, and advanced alerting for IT environments of all sizes where IT rack space is unavailable.

[www.apc.com/netbotz](http://www.apc.com/netbotz)

Life Is On

**APC**  
by Schneider Electric

# NetBotz Room Monitor 755

Advanced Protection for all IT Environments



## Surveillance, Sensing, and Access Control

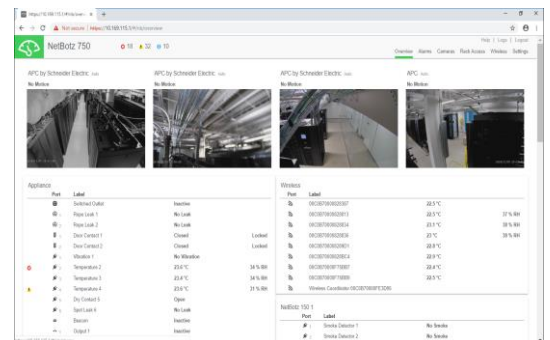
The NetBotz Room Monitor 755 is an active monitoring solution designed to protect against environmental threats and unauthorized access risks that can cause downtime to IT infrastructure, in IT environments where IT rack space is unavailable. With its integrated suite of sensors, access control pods, and the HD Camera Pod 165, the NetBotz 755 safeguards environments with surveillance and flexible alerting based on user-definable thresholds.

Compute is quickly moving closer to where it is used at the Edge, increasing the risks of water damage, high temperature & humidity, fire or other conditions bringing down business-critical applications. Intentional or malicious access events not only threaten compute availability, but also leave enterprises vulnerable to costly compliance violations. The NetBotz Room Monitor 755 provides integrated sensing, surveillance, and badged rack-access control to help mitigate these risks through a wide array of compatible sensors, camera clip capture and storage, and configurable alarming.

As an EcoStruxure™ Ready device, multiple NetBotz 755's can be managed through StruxureWare Data Center Expert, which stores and organizes camera clips. It also enables a single view of multiple cameras, rapid search and retrieval of video, and tagging of important clips to provide an audit trail of who has been accessing critical IT equipment. The expansive monitoring of the NetBotz 755 is easy to deploy, requiring only a single IP address and managed through a browser.

## Features

- Manage up to 4 cameras (3 external plus 1 integrated), 47 wireless sensors, 16 wired sensors, and badge access control for 1 rack through expansion pods
- Support for the HD & low-light NetBotz Camera Pod 165
- Alarming via email or SNMP based on user-configurable thresholds
- Local clip capture from cameras when motion is detected or other alerts occur
- Integration with StruxureWare Data Center Expert for long-term data and video storage
- Secure web-UI management



NetBotz 755 Web Management Dashboard

# NetBotz Room Monitor 755

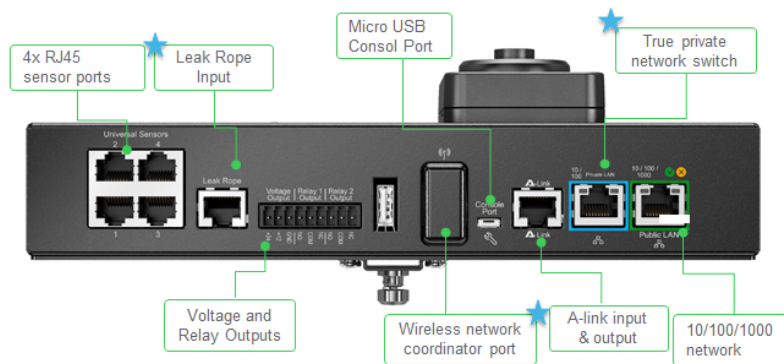
## Fully Integrated Plug & Play Architecture

The NetBotz 755 is the scalable solution to protect against downtime through active threat monitoring and badge access control to help your organization maintain security at the rack-level, supplementing existing building security.

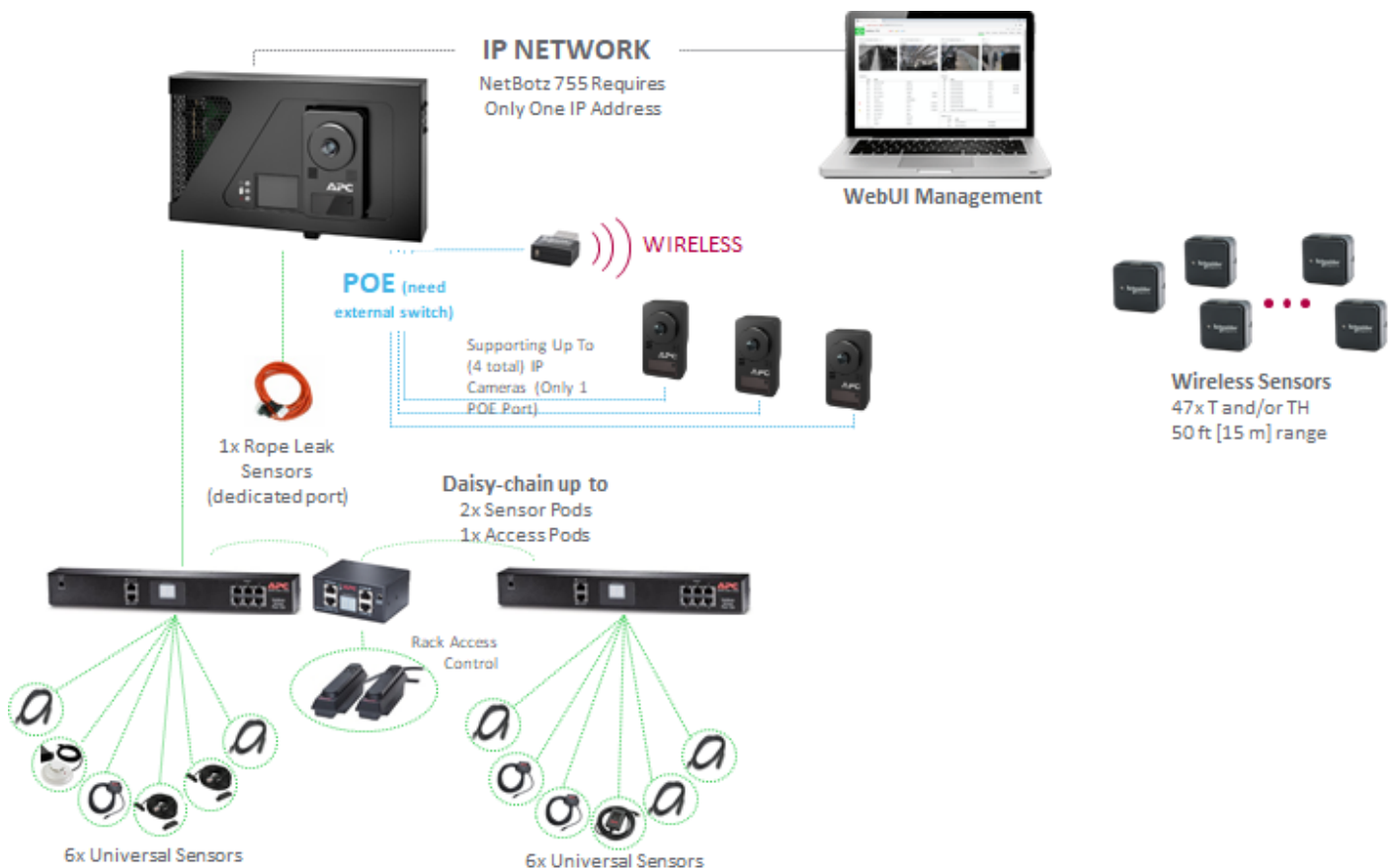
**Easy Integration** – Integrates with APC racks, NetBotz sensors, and Data Center Expert for easy centralized management.

**Compliance-Ready** – With the rack access handle kits, provides a complete audit trail on who is accessing your enclosures so your organization can more easily comply with data security regulations.

**More Powerful Than Ever** – Supports the HD NetBotz Camera Pod 165 with low-light capabilities for improved visibility into your IT; integrated wireless sensor support helps to reduce the clutter and expense of cabling.



★ = New product hardware highlights



# NetBotz Room Monitor 755

## Specifications Sheet

Product SKUs	
NetBotz Room Monitor 755	NBWL0755
Technical Specifications	
Includes	NetBotz Camera Pod 165 (NBPD0165) , Installation & Quick Configuration Guide, Micro USB Cable, Mounting Gear
Product Dimensions	140 x 244 x 91.28 mm (5.5 x 9.6 x 3.6 in)   1.56 kg (3.44 lbs) with Camera Pod 165 installed
Shipping Dimensions	121.0 x 533.0 x 318.0 mm (4.75 x 21.0 x 12.5 in)   3.72 kg (8.20 lbs)
Indicators	Power, Network Link , Temp and Humidity OLED screen
External Cameras Supported	NetBotz Camera Pod 165, ONVIF Profile S Cameras <sup>1</sup>
NetBotz Universal Wired Sensors Supported	Temp, Temp/Humidity, Door Contact, Smoke, Spot Leak, Vibration, Dry Contact, 0-5V
NetBotz Wireless Sensors Supported	Wireless Temp, Wireless Temp/Humidity, Wireless coordinator/router (NBWC100U only)
Expansion Pods Supported	Rack Sensor Pod 150, Room Sensor Pod 155, Rack Access Pod 170 <sup>2</sup>
Regulatory Approvals	CE; FCC 47 CFR Part 15 Class A, ICES-003 Class A, AS/NZS CISPR 22, VCCI Class A, Low Voltage Directive 2014/35/EC, EMC Directive 2014/30/EC, RoHS Directive 2011/65/EU, UL 60950-1, CAN/CSA No. 60950-1-03.
Connectors and Ports	(1) 10/100/1000 Base-T Public LAN, (4) APC Universal Sensor, (1) PoE Private Network Ports for Camera, (2) 12/24V relay IO, (1) USB ports, (1) Rope Leak, (1) A-link ports, (1) Wireless Coordinator Port, (1) Micro-USB Console Port
Protocols	A-Link, DHCP, DNS, HTTPS, SMTP, SNMP v1 and v3, SSHv2, TCP/IP, TLS 1.2
Management Interface	Google Chrome, Mozilla Firefox, REST API, StruxureWare Data Center Expert <sup>2</sup>
Operating Environment	Temperature: 0 - 45°C (32 – 113°F); Relative Humidity: 10-95% (non-condensing); Elevation (above MSL): 0 to 3000 m (0 to 10,000 ft) <i>Indoor use only, not designed for corrosive or caustic environments.</i>
Storage Environment	Temperature: -15 to 65°C (5 to 149°F); Relative Humidity: 10-95% (non-condensing); Elevation (above MSL): 0 to 15000 m (0 to 50,000 ft)
Standard Hardware Warranty	Two Years Factory Warranty, Includes Software Technical Support
Extended Warranty and Software Options	
WBEXTWAR1YR-NB-07	Service Pack 1 Year Parts and Software Support Extended Warranty for 1 NetBotz 7-Series
WBEXTWAR3YR-NB-07	Service Pack 3 Years Parts and Software Support Extended Warranty for 1 NetBotz 7-Series
Hardware Assembly Services	
WASSEMNBA-NB-20	NetBotz Assembly Service For Up to 3 Appliances and Associated Accessories
Software Configuration Services	
WCONFIG1NB-NB-10	NetBotz Configuration Service in ISX Designer – 1 Day
WCONFIG2NB-NB-10	NetBotz Configuration Service in ISX Designer – Each Additional Day

<sup>1</sup> Motion detection and other features may be limited when using non-NetBotz ONVIF cameras; learn more at [www.onvif.org](http://www.onvif.org)

<sup>2</sup> Data Center Expert v7.7 or higher is required for video surveillance functionality with NetBotz 755